

Your Guide to Camps offered through Palm Harbor Parks & Recreation

# Summer Camps

June-August 2026



**PALM HARBOR**  
PARKS & RECREATION

The Heart of Your Community

**PARKS | RECREATION | PROGRAMS | ACTIVITIES | MEETINGS | EVENTS**

**Returning Camp Adventure Registration Opens 2/2**

**Registration for New Campers and all Specialty Camps Opens 2/17**

# 2. Camp Directory & Content

	Wk 1 6/1-6/5	Wk 2 6/8-6/12	Wk 3 6/15-6/19	Wk 4 6/22-6/26	Wk 5 6/29-7/3	Wk 6 7/6-7/10	Wk 7 7/13-7/17	Wk 8 7/20-7/24	Wk 9 7/27-7/31	Wk 10 8/3-8/7
Camp Adventure	X	X	X	X	X	X	X	X	X	X
Bricks 4 Kidz				X		X	X			
Chalk Art	X		X					X		
Challenge Island					X	X			X	X
Confidently Creative		X		X			X			
Cooking Beginner	X	X	X	X			X	X	X	
Cooking Jr. Chef	X	X	X	X			X	X	X	
Dance				X		X	X			X
Dodgeball	X		X		X		X		X	
Dynamic Futbol				X		X		X		
First Mate	X	X	X	X		X	X	X	X	
Gymnastics	X	X	X	X			X	X	X	X
Jimmy the Bat Baseball	X	X	X		X					
Kayaking			X	X						
Land Fishing							X		X	X
Mad Science	X	X		X			X		X	
Multi-Sports		X		X		X		X		
Musical Theatre								X	X	
Paddleboard				X				X		
Tae Kwon Do										X
Weird Science			X		X	X				X
Wrap-Around	X	X	X	X	X	X	X	X	X	X



**PALM HARBOR**  
PARKS & RECREATION

Administrative Offices

@ The Centre

1500 16th Street

Palm Harbor, FL 34683

727.771.6000

PHparksandrec.org

## In This Issue

Camps Directory	2
Registration Information	3-4
Full Day Camp Adventure	5-7
Community Sponsors	6, 7, 10 & 19
Camp Wrap-Around	8
Theater Camp	8
Dance Camps	9
Art Camps	10
Enrichment Camps	11
Cooking Camps	12
STEAM Camps	12-14
Sport Camps	15-16
Water Sport Camps	16-17
Junior Counselor & Scholarship	18
Parks & Facility Locations	20

# Registration Information

3.

Palm Harbor Parks & Recreation Community Centre - Administrative Offices & Registration


Walk In: 1500 16TH Street Palm Harbor, FL 34683


Call In: 727.771.6000


On-line: PHparksandrec.org

## How Do I Register?

Registration for all classes and camp programs are on a first-come, first-served basis.

 **Click:** On-line registration can be completed at [www.PHparksandrec.org](http://www.PHparksandrec.org). Account set-up required and payment can be made using any major credit card at the time of registration.

 **Come In:** Registration can be done at The Centre, 1500 16th Street in Palm Harbor. In-person registration is accepted: Monday-Thursday 8 am-7 pm, Friday 8 am-4 pm Saturday-Sunday 11 am-2 pm.

 **Call:** 727.771.6000 during the business hours listed above to complete registration over the phone using a credit card.

## Waivers and Payment

Participants are required to complete an Activity Waiver. Waivers for participants under 18 must be completed by a parent or legal guardian. Payment is due in full at the time of registration. Registration is accepted over the phone using a credit card, in person or on-line at [www.phparksandrec.org](http://www.phparksandrec.org). Payment options include VISA, MasterCard, Discover, American Express, Cash or Check made out to PHCSA. Payment plans are only accepted for full day Summer Camp Adventure.

## Camp Payment Policy

**Camp Adventure:** All registrations are for a full camp week, no single day sign-ups. Camp registrations with a balance at time of registration will be required to set up a payment plan. The plan is available through the registration software.

- The first week of camp must be paid in full upon registering. All other weeks require a \$50 deposit to hold your spot for each week registered.
- The remaining balance will be placed on the payment plan beginning 5/25/26.
- Deposits are non-refundable.
- Your payment plan for the camp season can be seen in your account. The registration system will allocate your payments spread across the number of registered weeks of camp.

- Beginning 5/25/26, payments will be withdrawn every Monday.
- Sibling discount (Camp Adventure ONLY) are available; to obtain a sibling discount, you must come in or call to register. Discount not available on-line.

**Specialty Camps:** All registrations are for a full camp week, no single day sign-ups. Full payment is due at the time of registration to secure your child's spot.

**Camp Wrap-Around:** To secure your child's spot, full payment is due at the time of registration. On-line registration is not available.

**Scholarships:** PHPR offers a limited number of scholarships based on need. See page 18 for additional details.

## Refund/Transfer Policy

**Camp Refunds:** Refunds are not available for cancellations made by customers after May 15, 2026. **After May 15, all payments are non-refundable.** A documented medical or family emergency may be the only exception. Medical emergencies are evaluated on a case-by-case basis. Requests must be submitted in writing to the assistant director. All refunds will incur an administration fee for each cancelled camp.

**Camp Transfer:** Some camps are eligible for transfer; all requests must be made in writing at least two weeks before the camp start date. Transfers are subject to availability, and an administration fee will be applied.

## Camp Cancellation

Most camps require a minimum number of enrolled campers. Camps that do not reach their minimum will be cancelled, however, when PHPR cancels a camp for this reason, a full refund is provided.

## Waiting Lists

A waiting list will be formed and maintained after the camp has reached its maximum capacity. As spots in the camp become available, people on the list will be contacted in order and offered the opportunity to register.



## 4.

# Registration Information

## Specialty Camps & Camp Wrap-Around

If you are interested in extending your camper's day, consider enrolling in Camp Wrap-Around. See page 8 for details. On-line enrollment is not available. Please call or come into the Centre to register for Camp Wrap-Around.

## Weather Policy

For the safety of participants and instructors, inclement weather may cause outdoor activity cancellation. Staff will make every effort to contact enrollees and either prorate the program with the amount placed back on the enrollee's account or instructor may offer a make-up option. Call 727.771.6000 to check on the activity status.

## Code of Conduct

All campers are required to remain respectful of their Camp Counselors, fellow campers and the facilities. If a child's behavior becomes unruly or is a disruption, a parent/guardian will be contacted to pick-up the child immediately. Repeated unruly behavior will result in suspension or termination of participation, without refund.

## Cell Phone & Electronics

Cell phones and any electronics must remain in the camper's backpack throughout the course of the day. Electronics are never permitted outdoors or on field trips. Any electronics brought to camp are the camper's responsibility and if used, are at their own risk.

Parents must contact the **Camp Phone 727.643.5193** to reach a camper. If a camper needs to reach their parent during the camp day, the phone call is done through the Camp Administrator.

## Marketing and Social Media

As a public entity, we regularly take photos and videos of our programs and activities. Media may be used for future print, web or video advertising as well as social media, but photos/videos will never be shared or sold to commercial entities.

## Public Records

As per Florida Statue 119, all correspondence to/from the Palm Harbor Community Services Agency is considered a public record and may be released as allowed by law.

## Recreation Inclusion

Under the guidelines of the American with Disability Act (ADA) it is the intent of PHPR to include people of all abilities in our recreation programs and activities. PHPR will make reasonable modifications for individuals with a disability so that such individuals may participate in programs and activities. If you feel you need a particular modification, please call the Centre at least 1 week prior to the start of the program. PHPR is unable to make modifications that:

- Fundamentally alter the nature of the program, service or activity.
- Would cause undue burden on PHPR.
- Would constitute a direct threat to the health and safety of the participants.

All requests for modifications are assessed on a case-by-case basis. Participants should be able to perform the following essential functions.

- Follow basic instructions associated with the program or activity.
- Function in a group structure and participate in group activities.
- Use restroom facilities independently or with the assistance of a caregiver to be retained or provided by the participant.



## Palm Harbor Parks & Rec The Heart of Your Community

**Mission:** Dedicated to building a stronger community through quality, affordable programs and activities.

**Vision:** Palm Harbor Parks and Recreation wants to be the recreational, cultural, and gathering center of Palm Harbor. Palm Harbor Parks and Recreation is a division of Palm Harbor Community Services Agency.

PHCSA is the agency charged with managing leisure services in the unincorporated Palm Harbor area.  
[PHCSA.net](http://PHCSA.net)





# Full Day Camp Adventure

5.

## Full Day - Camp Adventure

Camp is held weekly  
Monday through Friday from 7 am-6 pm  
for those who have completed  
Kindergarten through 11 years old.

Drop Off anytime between 7-9 am  
and Pick Up anytime between 4:30-6 pm



Week 1: June 1-5	Week 6: July 6-10
Week 2: June 8-12	Week 7: July 13-17
Week 3: June 15-19	Week 8: July 20-24
Week 4: June 22-26	Week 9: July 27-31
Week 5: June 29-July 3	Week 10: August 3-7



## 2026 Camp Adventure

Camp Location: The Centre, 1500 16th Street  
Palm Harbor, FL 34683.

Camp Office Phone: 727.643.5193

### To Register:



Call: 727.771.6000



Click: [www.PHparksandrec.org](http://www.PHparksandrec.org)



Come-In: 1500 16th Street in Palm Harbor

Registration for returning Camp Adventure campers begins:  
Monday, February 2.

Registration for new Camp Adventure campers begins:  
Tuesday, February 17.

## Camp Adventure Activities

Our returning campers rave over the many activities of Camp Adventure. A full Activity Calendar will be available in early May. Parents can expect along with fun and friendship, their camper will get to experience:

- Indoor Games and Activities
- Outdoor Games & Sports
- Arts & Crafts
- Weekly outdoor water activities
- Weekly movies suitable for all campers
- Weekly Field Trips
- Fun Presentations and Entertainers
- Learning Opportunities
- Attentive Camp Counselors

**DON'T LET THE SUMMER GO BY WITHOUT AN ADVENTURE! REGISTER ONLINE AT [PHPARKSANDREC.ORG](http://PHPARKSANDREC.ORG)**

Register : [www.PHparksandrec.org](http://www.PHparksandrec.org)

727-771-6000

6.

# Full Day Camp Adventure

Our full day camp, "Camp Adventure" is a great way for your child to have fun and meet new friends this summer! Your child will experience camp with peers where they will discover a variety of fun summer activities.

Each week, campers can expect to go on a field trip or we'll have the fun trucked in to them. There are also fun presentations planned to help keep campers enlightened and entertained throughout the summer.

All instructors, staff and coaches have passed a Level 2 Background Check from the Florida Department of Children and Families. Additionally, access to the PHPR Camp Adventure campus is managed. Anyone wishing to access the building during camp hours must ring for entrance and wait for staff to grant them building access. Parents must authorize specific individuals to pick-up/drop-off their camper(s).

Camp Adventure is popular and fills quickly. Be sure to get your child registered soon to guarantee their spot in our fun-filled summer camp.

Camp Adventure at Ray Jay Stadium



ARE YOU REACHING  
THE MEMBERS IN YOUR  
COMMUNITY?

To advertise here  
visit [ipicommunities.com](https://www.ipicommunities.com/adcreator)  
/adcreator

DOES YOUR NONPROFIT  
ORGANIZATION NEED  
A NEWSLETTER?

Engaging,  
ad-supported  
print and digital  
newsletters to reach  
your community.

Visit [ipicommunities.com](https://www.ipicommunities.com)



THRIVE  
LOCALLY

ADVERTISE HERE  
to reach your community



Call 800-477-4574



For ad info. call 1-800-477-4574 • [www.4lpi.com](https://www.4lpi.com)

16-0520

# Full Day Camp Adventure

7.

## AGES: 5½-11 years

- All campers **MUST** have completed Kindergarten, no exceptions.
- Previous Camp Adventure campers will be considered for Junior Counselor positions at age 12.

## FEES:

- \$150 for each week.
- First week of Camp Adventure must be paid in full. Each subsequent week requires \$50 deposit per week.
- Fee includes all administration fees, all on-site activities, field trips, on-site water activities and before and after care.
- A \$1 per minute late fee will apply if the pick-up is after 6 pm. All registrations are for the full camp week. Single day sign-ups are not permitted.
- **Prior to registering, please see page 3 for Refund Policy.**

## CAMP TIMES:

- 7 am-6 pm.
- Planned activities are from 9 am-4:30 pm. Before and After Care is included.
- Campers not picked up by Camp's conclusion at 6 pm will be assessed a late fee of \$1 per minute late. Habitual late pick-ups may result in camp suspension.

## DISCOUNTS:

Discounts are available for Camp Adventure **ONLY**. Discounts are not applicable for any Specialty Camp registration. To assure discount is applied correctly, please call or come into the Centre.

- 10% Sibling Discount applied after the first child pays in full (must call or come in to receive).
- Book weeks 1-10 before 5/25/26 and get \$50 off registration credited to the cost of Week 10.



**SUPPORT THE  
ADVERTISERS**  
that Support our  
Community!



## 8.

# Wrap Around & Theater

## Camp Wrap-Around

Is your child enrolled in a half day camp but you would prefer full day supervision? Palm Harbor Parks & Rec has you covered! Make your half-day Specialty Camp a full day by adding Camp Wrap-Around to your child's camp week. If your child is enrolled in a PHPR Specialty Camp (morning or afternoon), they qualify to participate in Camp Adventure for the remainder of the camp day. Camp Wrap-Around is offered at a fee in addition to the Specialty Camp fee. Field trips are not available for Camp Wrap-Around but supervision is provided at the Centre during field trip hours.

PHPR does not provide transportation from one camp location to another. If the Specialty Camp you enroll in is not located at The Centre, transportation to the Centre will be the responsibility of the parent/guardian. If the Specialty Camp is located at The Centre, a Camp Counselor will walk your camper to/from Camp Adventure.

Please make note of the Specialty Camp location. Some locations have shifted this year as we begin renovations to open a new building at the Centre.

On-line registration is not available for Camp Wrap-Around. Please call 727.771.6000 or come in to the Centre to register.

**Ages: 5½ - 11 years**      **Fee: \$80/week**

- \* Limited space available
- \* Celtic Soccer Campers are not eligible for Camp Wrap-Around.
- \* Specialty Camp information can be found on pages 8-17.

## Musical Theater Camp

This unique 2-week musical theater camp provides children with the opportunity to create their play through improvisation, learning songs, dances and performing their show for an audience.

Campers will feel more confident creating their lines with their own words, learning music from a professional opera singer, learning dances from the pros

and having a blast doing it. Full costumes and sets in the production make the story come alive and provides the opportunity to have a full performance experience which will take place on Friday, July 31; open to all.

**Available Week: 8 through 9**

**Monday through Friday**

**9 am-3 pm**

**Ages 7-12 @ Sunderman Rec Complex      Fee: \$450/2 wk**  
**Middle Blue Building**

*Bring: Snack, lunch, water and wear sneakers.*



Palm Harbor Parks & Rec is on the cusp of a large Centre expansion! The addition will house a full-size gymnasium, an elevated walking track as well as additional programming spaces. It will double as a North Pinellas County emergency shelter when the need arises. Watch the heart of your community grow to better serve everyone in our Palm Harbor community!

# Dance Camps

9.

## Princess Dance Camp

Twirl, leap and shine while exploring movements inspired by their favorite princesses.

With enchanting choreography, creative games and royal fun, campers will build confidence, grace and friendship - just like

a true princess. Disney princess movies like the *Little Mermaid 2023* or *Moana 1 & 2* will be played during our half hour rest time. Campers can expect to learn a mix of ballet, jazz and lyrical dance as well as two routines to be performed on the last day for family and friends.

**Available Week: 3**

**Monday through Friday**

**8:30 am-12:30 pm**

**Ages 4-10 @ The Centre**

**Fee: \$215/wk**

*Snack, water and a themed craft will be provided daily.*

*Water bottle and additional snacks are encouraged. Wear clothes and shoes you can dance and move in.*



## Swifties Dance Camp

Get ready to shake it off and dance like a superstar!

Campers will groove to all the hits, from "Love Story" to "Shake it Off" while learning fun routines inspired by Taylor's iconic music videos. With a mix of pop, country and everything in between, this camp will have everyone feeling like they're in their own music video. Campers can expect to learn a mix of ballet, jazz and lyrical dance. Two routines will be performed on the last day for family and friends.

**Available Week: 4**

**Monday through Friday**

**8:30 am-12:30 pm**

**Ages 8-13 @ Sunderman Rec Complex**

**Fee: \$215/wk**

**Middle Blue Building**

*Snack, water and a craft will be provided daily. Water bottle and additional snacks are encouraged. Wear clothes and shoes you can dance in.*

## Harry Potter Dance Camp

Explore spells, houses and magical creatures through creative movement, choreography and imagination. From enchanting routines to fun games straight out of Hogwarts, campers will build a little bit of magic - with no wand required! Campers can expect to learn a mix of ballet, jazz and lyrical dance as well as two routines to be performed on the last day for family and friends.

**Available Week: 6**

**Monday through Friday**

**8:30 am-12:30 pm**

**Ages 8-13 @ Sunderman Rec Complex**

**Fee: \$215/wk**

**Middle Blue Building**

*Snack, water and a themed craft will be provided daily.*

*Water bottle and additional snacks are encouraged. Wear clothes and shoes you can dance and move in.*

## Beach Bash Dance Camp

Dive into the ultimate beach bash, where sun, sand and rhythm collide! Our theme celebrates the carefree, vibrant energy of summer beach life. Think tropical beats, colorful sunsets, surf-inspired moves and playful choreography that mirrors the waves, palm trees and seaside adventures.

Campers can expect to learn a mix of ballet, jazz and lyrical dance. Two routines will be performed on the last day for family and friends.

**Available Week: 7**

**Monday through Friday**

**8:30 am-12:30 pm**

**Ages 4-10 @ Sunderman Rec Complex**

**Fee: \$215/wk**

**Middle Blue Building**

*Snack, water and a craft will be provided daily. Water bottle and additional snacks are encouraged. Wear clothes and shoes you can dance in.*

## Got a Talent to Share?

**Instructors and Volunteers are always welcome**

Palm Harbor Parks and Recreation is always looking to offer new and innovative classes to the community. If you or someone you know would like to offer a class at The Centre, contact our Recreation Coordinator at 727.771.6000 or by email at [recreation@phparksandrec.org](mailto:recreation@phparksandrec.org)

## The Chalk Lab: Chalk Art Camp

Your child won't want to miss this 3-day creative summer camp where they will learn real chalk art techniques in a fun, hands-on environment. Campers explore color theory, blending, shading and simple compositions. We'll work outside with plenty of shade and water breaks. Indoor alternative space is available when weather requires it.

**Available Weeks: 1, 3, 8**

**Monday through Wednesday**

**Ages 8-13 @ Sunderman Rec Complex Fee: \$180/wk**

**Meeting Room, North Blue Building**

*Bring: Snack, water bottle, wear dark clothes that can get chalky.*



**9 am-12 pm**

## Confidently Creative Camp

Join a local artist and published author for a week filled with fun and encouraging art projects. Campers will enjoy paper making, collage, painting and water coloring. They'll explore confidence boards and learn the art of Zine making as they develop a sense of artistic sureness. The goal of this unique camp is to encourage fun with creativity and instill a sense of confidence in both the camper and their art.

**Available Weeks: 2, 4, 7**

**Monday through Friday**

**9-1 pm**

**Ages 7-12 @ Sunderman Rec Complex Fee: \$150/wk**

**Meeting Room, North Blue Building**

*Bring: Water, snack and large t-shirt or art smock.*



Some Specialty Camp locations have shifted this year as we begin renovations to open a new building at the Centre. Please take a moment to check your child's updated camp location.



## SHORT STAFFED?

Place an ad here to find new local talent for your business.

**CALL 800-477-4574**

## IF YOU LIVE ALONE

**MDMedAlert!™**

**At HOME and AWAY!**

STARTING AT  
**\$19<sup>95</sup>** /mo.

✓ Ambulance ✓ Police ✓ Family

"STAY SAFE in the HOME YOU LOVE!" ✓ GPS & Fall Alert

**CALL NOW!**



**800.809.3570**

md-medalert.com



**FREE**  
AD DESIGN  
with purchase  
of this space

**CALL 800-477-4574**

**LET'S GROW YOUR BUSINESS**  
Advertise in our Newsletter!

**CONTACT ME Rich Fernbach**

rfernbach@lpicommunities.com • (800) 477-4574 x3675

# SUPPORT OUR ADVERTISERS!



# Enrichment Camps

11.

## Bricks 4 Kidz Camps

Monday through Friday    AM: 9 am-12 pm and/or PM: 1-4 pm  
Ages 5-12 @ The Centre    Fee: \$170/wk (half day) \$270 (full day)

Enrolling for the full day? Please call or come into the Centre to receive the full day discount. Discount not available on-line.  
All campers will have photos taken of LEGO® models they make throughout the week  
and take home a custom-made LEGO® minifigure.

*Half Day Camper: Bring a snack & drink*

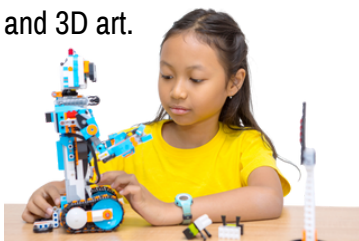
*Full Day Camper: Bring two snacks, lunch & drink.*

### LEGO® Classic Arcade Camp

Week 4 AM from 9 am - 12 pm

Today it's all about the world of online video games and apps. Join us for this hands-on classic LEGO® camp based on themes like Super Mario Bros., Minecraft, Roblox, Pokémon and many more, where campers will bring popular video games to life with their building skills through the use of our LEGO® robots, mosaics and 3D art.

Each day will be a new adventure as the virtual and LEGO® worlds join forces!



### LEGO® Masters Camp

Week 4 PM from 1 - 4 pm

The hit Fox TV show is back and this means our challenges and builds have gotten bigger and better! Each day brings a new challenge where campers will have to use their building skills to show they are deserving of the greatest title of all....a LEGO® Master! Expect some Pop Culture references throughout the camp week.

### LEGO® Minecraft Mania Camp

Week 6 AM from 9 am -12 pm

Experience the worlds of Minecraft with LEGO® bricks in this fun camp! Delve deeper into the world of Minecraft with Ender dragons, Steve, Creepers, Endermens, Witches and Withers, and all the popular characters Minecraft has to offer. Face new challenges each day, build LEGO® motorized robotic models and craft key elements from the popular Minecraft game.

### LEGO® Superhero Builder Camp

Week 6 PM from 1 - 4 pm

Enjoy a week full of your favorite Marvel and DC superheroes! Spiderman, Captain America, Batman, Iron Man, Wonder Woman, Superman, Thor, Aquaman, The Flash, The Hulk, and much more! We've even added more characters to our Super Team so our campers can bring these powers to life using LEGO® bricks. One day we will be building a flying LEGO® Batman jet, and the next we will be chasing down villains of the Avengers!

### LEGO® Star Wars:

#### Battle for the Galaxy Camp

Week 7 AM from 9 am - 12 pm

A long time ago in a galaxy far away, the Jedis, Empire and Mandalorians were all in a battle to reign supreme! This camp will have your child learning the way of the Force by creating Star Wars characters and spaceships out of LEGO® bricks. Campers will use their creativity along with our signature building methods to create all the Star Wars characters.

### LEGO® Mashup Camp

Week 7 PM from 1 - 4 pm

Take part in the most popular camp of Summer '26! All campers will create LEGO® models based on the most popular themes such as Minecraft, Super Mario Bros., Star Wars, Superheroes, Roblox, Jurassic World, Teenage Mutant Ninja Turtles, Harry Potter, Pokemon, Disney and more. Experience a different theme each day.



# 12.

# Cooking/S.T.E.A.M. Camps

## Beginner Cooking Camp

Is your child always asking to help in the kitchen or begs to bake cookies? Enroll them in camp that will teach them how to get started in the kitchen, how to read recipes, proper use of utensils and how to stay focused while cooking. They'll learn kitchen safety from equipment to food handling and will be assured mistakes are sometimes part of the delicious process.



### Available Weeks:

1 (Mexican)

2 (Pastry)

3 (Italian)

4 (Pastry)

7 (Pizza)

8 (Greek)

9 (Pastry)

Monday through Friday

8:30-11:30 am

Ages 6-9 @ The Centre

Fee: \$200/wk

*Bring: Bottled water and wear closed toe shoes. No flip flops or sandals. Hair longer than shoulder length must be pulled back.*

## Junior Chef Cooking Camp

Here's the perfect camp to introduce your young chef to various different cultural cuisines. Cooking from around the world will be featured and campers will gain knowledge about the country whose recipes they are using. Junior Chefs should be comfortable in the kitchen using knives, following instructions and doing dishes.

### Available Weeks:

1 (Mexican)

2 (Pastry)

3 (Italian)

4 (Pastry)

7 (Pizza)

8 (Greek)

9 (Pastry)

Monday through Friday

12:30-3:30 pm

Ages 10-16 @ The Centre

Fee: \$200/wk

*Bring: Bottled water and wear closed toe shoes. No flip flops or sandals. Hair longer than shoulder length must be pulled back.*

## Weird Science

Get ready for a summer full of hands-on discovery, exciting experiments and big "wow" moments. Campers will cook up tasty science in Kitchen Chemistry, explore ocean depths and rainforest ecosystems, mix and test bubbling reactions during Mix, Bubble & React! and turn the outdoors into a science lab with Digging into Nature & Backyard Science. Each week is packed with creative experiments, building challenges and curiosity-driven fun that keeps young scientists engaged all summer long.



Kitchen Chemistry & Edible Experiments

Week 3

Deep Sea Discovery & Rainforest STEM

Week 5

Mix, Bubble & React! Science Week

Week 6

Digging into Nature & Backyard Science

Week 10

Monday through Friday

9 am-3 pm

Ages 6-12

@ The Centre

Fee: \$250

*Bring: Snack, water bottle, non-perishable lunch, hat, sunblock, closed toe shoes.*



Some Specialty Camp locations have shifted this year as we begin renovations to open a new building at the Centre Please take a moment to check your child's updated camp location.

## Mad Science Camps

### Crazy Chemworks

From the super tiny to the super slimy, campers will embark on a fascinating journey of exploration and discovery in the world of atoms, molecules and chemical reactions. Get introduced to lab equipment, discover how and why things glow and discover the science of sticky-ness. Test pH with different indicators and find out why acids and bases don't get along. Investigate the science of cold and stock your new home lab with cool take-homes every day.

**Available Week: 1**

**Monday through Friday**

**9 am–12 pm**

**Ages 6-12 @ The Centre**

**Fee: \$200/wk**

Bring: Water bottle, snack.

### Lights, Sights, Sound!

Explore your senses and open your eyes, ears and tastebuds to the world of science, as we create a symphony of sounds, make dazzling displays of color and even learn the science of cotton candy. Campers will have plenty of hands-on opportunity for high engagement activities including taking home a tool or toy of science to keep the discoveries going at home.

**Available Week: 2**

**Monday through Friday**

**9 am–12 pm**

**Ages 6-12 @ The Centre**

**Fee: \$200/wk**

Bring: Water bottle, snack

### Natural Wonders

Come along and explore all this planet has to offer while digging deep into animals, elements, minerals and more. Sift for gemstones, make some animal tracks and dive deep into our oceans. Campers should be prepared to engage and tap into their inner archaeologist.

**Available Week: 4**

**Monday through Friday**

**9 am–12 pm**

**Ages 6-12 @ The Centre**

**Fee: \$200/wk**

Bring: Water bottle, snack

### Catapults, Crime and Toys!

Discover how a detective solves a crime and how science is critical to your favorite toys—including Bey Blades “Let it Rip”! Campers will enjoy a variety of



activities that will include uncovering cool science you can do in your very own kitchen, building simple machines, exploring the world of telecommunications, discovering how special movie effects are created and exploring the amazing world of robots. With a different topic each day, this camp is certainly action-packed with hand-on experiments and amazing take-home projects.

**Available Week: 7**

**Monday through Friday**

**9 am–12 pm**

**Ages 6-12 @ The Centre**

**Fee: \$200/wk**

Bring: Water bottle, snack.

### Magic, Forces and Flight

Take an exciting look at air pressure and vortexes. Unlock the secrets of some mysterious chemicals and the reactions they produce. Find out the shocking truth of electricity, how it is produced and used. Uncover the basic forces of physics through some very cool demonstrations and build'em yourself activities. Learn all about wave dynamics and our watery environments and discover the science behind lots of secret magic tricks that campers will get to perform. Lastly, campers will investigate the principles of flight by building and flying lots of model airplanes and becoming engineers who design and build their very own super structures.

**Available Week: 9**

**Monday through Friday**

**9 am–12 pm**

**Ages 6-12 @ The Centre**

**Fee: \$200/wk**

Bring: Water bottle, snack.



## Challenge Island Camps

### Slimetopia 5: Diners, Drive-Thrus and Dives

Be a host for a groundbreaking reality experiment! Prepare to embark on a nationwide expedition to investigate the chemistry, texture dynamics and sensory science behind America's slimiest culinary creations. From the polymeric elasticity of In-and-Out burger slime to the colloidal composition of the Tex-Mex slime, the biopolymer viscosity of King Cake slime and the thermal phase transitions of Peach Cobbler a la mode slime, our campers will conduct a hands-on exploration of ooey, gooey gastronomy across the United States in this hands-on, very active STEM camp.



**Available Week: 5**

**Monday through Friday**

**Ages 6-10 @ Sunderman Rec Complex**

**Meeting Room, North Blue Building**

Bring: Water bottle and snack

**9 am-12 pm**

**Fee: \$200/wk**

### Islandmon STEAM Quest STEM Camp

Inspired by gaming greats like Pokémon, Donkey Kong and other creature-collecting worlds, campers will take on the roles of biologists, ecologists and engineers as they explore, classify and "train" the island's mini-monsters. They'll investigate how these species adapt to different environments, analyze their habitats and design technologies to support their survival - drawing on real scientific principles like evolution, ecosystems and energy flow just like in the popular gaming world of Pokémon. Along the way, they'll visit challenge "gyms" and test their discoveries. This hands-on camp is part science quest, part creative adventure - just without the Pokeballs!

**Available Week: 9**

**Monday through Friday**

**Ages 6-10 @ Sunderman Rec Complex**

**Meeting Room, North Blue Building**

Bring: Water bottle and snack

**9 am-12 pm**

**Fee: \$200/wk**

### Jurassic Island STEM Camp

Calling all budding paleontologists! Journey to Jurassic Island and step into an ancient world preserved in stone. Campers will investigate prehistoric Earth through hands-on STEM explorations that combine geology, biology and environmental science. Our field scientists will examine fossil evidence, reconstruct dinosaur habitats and explore the evolutionary adaptations that helped species like Brachiosaurus, Velociraptor, Pterodactylus and Tyrannosaurus Rex survive in dynamic ecosystems. Through experiments, model building and creative engineering challenges, campers will analyze how climate, terrain and food webs shaped the age of the dinosaurs. This science-powered expedition is the ultimate learning adventure-where curiosity becomes discovery!

**Available Week: 6**

**Monday through Friday**

**Ages 6-10 @ Sunderman Rec Complex**

**Meeting Room, North Blue Building**

Bring: Water bottle and snack

**9 am-12 pm**

**Fee: \$200/wk**

### Storytopia STEM Camp

Welcome to Storytopia Island, where children's favorite stories are transformed into immersive STEAM experiences. Campers will engage in hands-on engineering challenges inspired by both modern classics and timeless tales, from Harry Potter's Magical Beast Motorbike Ride to Alice in Wonderland's Spinning Mad Tea Party. Throughout this adventure, campers will explore fundamental STEM principles as they follow the engineering design process - brainstorming, planning, building, testing and refining their creations. Whether constructing foam rockets or designing story-themed amusement rides, this camp ignites curiosity, creativity and scientific thinking through the power of storytelling.

**Available Week: 10**

**Monday through Friday**

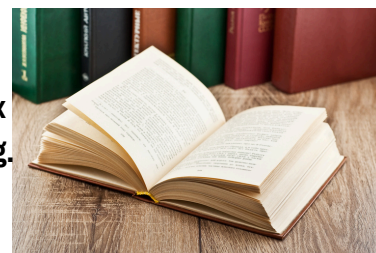
**9 am-12 pm Ages 6-10**

**@ Sunderman Rec Complex**

**Meeting Room, N. Blue Bldg.**

**Fee: \$200/wk**

Bring: Water bottle and snack



# Sports Camps

15.

## Gymnastics Camp

EuroStars Gymnastics, with a strong Romanian background and more than 44 years of experience in gymnastics, is proud to offer a summer full of exciting camp activities. Campers new to gymnastics will work on building a solid foundation while more experienced gymnasts will build upon acquired skills. Campers will “flip” over the fun activities and will look forward to “tumbling” back for more weeks of Gymnastics camp! Note: this camp meets in the afternoon.

**Available Weeks: 1, 2, 3, 8, 9, 10**

**Monday through Friday**

**1-5 pm**

**Ages 4-12 @ The Centre**

**Fee : \$175/week**

*Attire: Girls: leotard or one piece bathing suit. No lose clothing or jewelry. Boys: T-shirt and shorts. Bring: Lunch box for snack and bottled water.*

## Dynamic Futbol Soccer Camp

Welcome to Dynamic Futbol Futsal! This camp will give your child the opportunity to learn from coaches with over 18+ years'



experience. Campers will learn technical skills, game tactics, and game scenarios in a competitive atmosphere. Players are taught through structure with the goal of developing players so they have the desire to be their best and enjoy the game. No need to worry about the heat as the covered court will protect against the sun!

**Available Weeks: 4, 6, 8**

**Monday through Friday**

**9 am-12 pm**

**Ages 7-12 @ Sunderman Covered Court**

**Fee: \$150/wk**

*Bring: Plenty of water, tennis shoes (no cleats), shin guards and a towel for sweat.*

## Jimmy the Bat Baseball Camp

Since 1999, JTB Baseball has offered camps for area ballplayers of all skill levels.

With a fun and positive learning environment, your ballplayer will thrive while they learn proper fundamentals, teamwork, and sportsmanship.

All campers will be placed on a team and a competitive camp baseball tournament will be played weekly. Each session will be capped at 72 players. Coach Felce played professional baseball with the Atlanta Braves organization from 1994-1995 and he played college baseball at the University of South Florida. He is highly regarded throughout the Tampa Bay area as a baseball ambassador, and his passion for the game is evident at every camp session. For specific camp information, call or text Coach Felce at 727.686.3437.

**Available Weeks: 1, 2, 3, 5**

**Monday through Friday**

**9 am-2 pm**

**Ages 8-13 @ Sunderman Rec Complex**

**Middle Blue Building**

**Fee: \$200/wk**

*Bring: Baseball equipment (glove, bat, batting helmet), snack, lunch, plenty of water, hat, sunscreen and wear sneakers or cleated shoes.*



## Tae Kwon Do Camp

Tae Kwon Do is a great martial art that teaches self-defense, sportsmanship and discipline. Our highly experienced camp instructor is a seventh-degree international black belt. This camp is for both the beginner and the advanced learner looking to sharpen their skills. A uniform is not required.

**Available Week: 10**

**Monday through Thursday**

**9 am-12 pm**

**Ages 8-13 @ The Centre**

**Fee: \$120/wk**

*Wear: Martial arts uniform or t-shirt and loose shorts (basketball style).*

16.

# Sports/Water Camps

## SPONSOR A CHILD

Would you like to help a Palm Harbor child go to camp?



\$150 will sponsor one child for one week of our full day Camp Adventure. If you have any questions or would like to become a sponsor, contact the Centre at 727-771-6000 or by email at [recreation@PHparksandrec.org](mailto:recreation@PHparksandrec.org).

Camp provides a safe, educational and healthy outlet for our community's children. All children can benefit from a summer camp experience, especially those who would otherwise be unable to attend due to financial constraints or family situations.

Help make a child's summer a truly memorable one!

### Dodgeball Camp

Join us for a week (or more) of intense Dodgeball action, camaraderie and unforgettable camp memories! Dive, dip, duck and dodge your way to an extraordinary summer experience. Beyond the game of Dodgeball, enjoy a variety of team building games that will keep all campers actively involved while forging lasting friendships.

**Available Weeks: 1, 3, 5, 7, 9**

**Monday through Friday**

**Ages 7-13 @ The Centre**

*Bring: Water, light snack and wear athletic shoes and sunscreen.*

**9 am-12 pm**

**Fee: \$130/wk**



### Multi-Sports Camp

At this camp, kids, sports and F-U-N all come together. If you are looking for a camp experience with endless variety, look no further! Campers will learn and play timeless games such as Kickball, Wiffleball, Capture the Flag and Dodge Ball. They'll also learn new games like Gaga Ball and 9 Square in the Air.

**Available Weeks: 2, 4, 6, 8**

**Monday through Friday**

**Ages 6-15 @ The Centre**

*Bring: Light snack, water, and wear hat, sunscreen and closed toe shoes.*

**9 am-12 pm**

**Fee: \$130/wk**

### Stand Up Paddleboard Camp

This beginner camp will have students participating in team building activities to learn proper strokes and safety precautions. Get out, get active and get your paddle on!

**Available Weeks: 4, 8**

**Monday through Friday**

**Ages 10-16 @ Pop Stansell Park**

*Bring: Send campers in water appropriate clothing (bathing suit is okay) with water shoes. A snack, water and sunscreen are needed each day.*

**9 am-12 pm**

**Fee: \$185/wk**

### Celtic Soccer Camp

Celtic Soccer, a PHPR partner organization, will be offering youth soccer camps this summer. Registration for these camps can be done directly through the organization and not PHPR. For complete details visit their website at [www.floridaceltic.com](http://www.floridaceltic.com) or call 727.282.4660.



# Water Sports Camp

17.

## Kayaking Camp

Take advantage of the scenic Florida waters and help your camper appreciate the natural surrounding beauty by enrolling in Kayaking Camp. Campers will learn boating safety and all about the natural features of the waterways in our area. Space is limited due to safety restrictions. Advance registration is required. Osprey Bay Outdoors is a recognized leader in water activities and is accredited by the American Canoe Association.

**Available Week: 3 for Ages 8-12**

**Available Week: 4 for Ages 13+**

**Monday through Friday**

**9 am-12 pm**

**@ Pop Stansell Park Boat Launch**

**Fee: \$205/wk**

*Bring: Water, sunscreen, water shoes, sunglasses, hat and towel.*



## Land Fishing Camp

In this fun, dock-side camp, we explore the fish of Florida at Pop Stansell Park. Each child will learn the basics of fishing; how to bait a hook, tie knots and proper fishing techniques. Campers will be provided with a fishing pole that they can keep at the end of camp.

**Available Weeks: 7, 9, 10**

**Monday through Friday**

**8 am-11 am**

**Ages 7-12 @ Pop Stansell Park**

**Fee: \$145/wk**

*Bring: Send campers in water appropriate clothing (bathing suit is okay). A snack, hat, water and sunscreen are needed each day.*

## First Mate Academy Camp

Ahoy and welcome to First Mate Camp where campers will learn boating and fishing skills needed to assist a Captain and become a good First Mate. Each boat provides an exceptional 3:1 student to instructor ratio ensuring participants will safely and



fully experience what it takes to be a First Mate on a fishing charter that targets specific fish and each camp week is uniquely themed by that fish. All learning relates to the fish of the week including locating and catching the targeted species, catching & rigging the most effective bait, species rules/regulations & conservation practices, knot typing, hooks, weights, fishing line and more. Campers experience hands-on learning and gain essential marine skills including boat safety and marine terminology, cast netting, rod casting and boat launching procedures. Learning will take place alongside a USCG Charter Captain and professional First Mates both on a boat in the water and on dry land. Safety is always the #1 priority followed closely by learning and having fun! Daily lunch provided by Molly Goodheads restaurant (kids menu). Additionally, all campers will receive a 2026 camp t-shirt!

**Available Weeks:**

**1 (Redfish)**

**2 (Redfish)**

**3 (Tarpon)**

**4 (Tarpon)**

**6 (Shark)**

**7 (Snook)**

**8 (Snook)**

**9 (Inshore Slam)**

**Monday through Friday**

**8:30 am-2:30 pm**

**Ages 8-14 @ Speckled Trout Marina**

**Fee: \$625/wk**

**370 Bayshore Drive in Palm Harbor**

*Bring: Water bottle, sunshirt, water friendly shorts or swimsuit, towel, water shoes, hat, light snack, motion illness meds if needed, positive attitude and wear sunscreen.*

# 18. Jr. Counselor/Scholarships

## Junior Counselor Program

Our Junior Counselor (JC) program focuses on developing leadership skills in teens age 13-17 through working hand-in-hand with our summer camp team. This year, previous Camp Adventure campers will be considered for Junior Counselor positions at age 12. JC's are an integral part of our programming and assist in all aspects of summer camp. This program is perfect for those seeking Bright Future hours too!

The Junior Counselor program is for interested teens who want to take part in our summer activities and be the "helping hands" in a day camp setting. JC's will have various duties in the camp program such as; setting up rooms for the day, preparing crafts, assisting with games and sports, helping keep the classrooms neat and tidy, being an active member of the Camp Adventure team and more.

Interested teens **must submit an application by March 31** to be considered, as this is a competitive program and space is limited. JC's are asked to commit to 5 of the 10 weeks of summer camp. They will be scheduled for 4-hour shifts.

To get started, please contact us at The Centre (727.771.6000) to get a Junior Counselor application. Interested candidates should be ready to interview prior to consideration and those selected will be required to complete a training session before camp begins.

## Scholarship Information

### Dean Parks Memorial Scholarship

In honor of Captain Dean Parks, who was an instrumental part of our fishing camps at Palm Harbor Parks and Recreation, we are pleased to offer a limited number of scholarships specifically for fishing camps. The scholarship is available for either type of fishing, boat or land.

### Camp Adventure Scholarships

Palm Harbor Parks and Recreation has a limited amount of available funding to provide scholarships for weekly Camp Adventure registration fees. Scholarships are available to children who, without financial assistance, would otherwise be unable to participate in Summer Camp.



An application and proof of financial need is required. For an application and more information, email [info@PHparksandrec.org](mailto:info@PHparksandrec.org).

## Much Thanks to our Elite Centre Sponsors



1750 Curlew Road – Palm Harbor 34683 – 727.789.2000



261 US Alt. 19 – Palm Harbor 34683 – 727.316.2008



BUYING OR SELLING YOUR  
CASTLE OR YOUR SHACK?  
KIM ADAMS HAS YOUR BACK!

**KIM ADAMS**  
REALTOR®  
**727.300.6560**

EMAIL: kimadams.agent@gmail.com

**RE/MAX**  
ELITE



RE/MAX Elite Realty  
3400 US Hwy 10N  
Suite 309  
Palm Harbor, FL 34684



www.facebook.com/kimadamsrealestate

SERVING PALM HARBOR FOR OVER 16 YEARS.

Ask about our  
Military Discounts  
and Financing.

Call Now

Your reliable and  
affordable local  
Plumbing Company.

Licensed & Insured - License # CKC43204

**727-293-5732**

www.piratesplumbing.com



**ADVERTISE HERE**  
to reach your community



**Call 800-950-9952**

**ADT-Monitored  
Home Security**

Get 24-Hour Protection  
From a Name You Can Trust

- Burglary
- Flood Detection
- Fire Safety
- Carbon Monoxide



Authorized  
Provider

SafeStreets

**833-287-3502**

**WE'RE HIRING!**  
AD SALES EXECUTIVES



BE YOURSELF.  
BRING YOUR PASSION.  
WORK WITH PURPOSE.

- Paid training
- Some travel
- Work-life balance
- Full-Time with benefits
- Serve your community



Contact us at  
careers@4lpi.com or  
www.4lpi.com/careers

WE APPRECIATE OUR  
ADVERTISERS!

Redeem this coupon for one

**Free  
Cookie**

At Crumbl -  
Palm Harbor-  
Boat Ranch

Limit one cookie  
per person  
per coupon.

798 E Lake Rd.  
Palm Harbor, FL

Expires: 2/15/2026



We offer catering for every  
meaningful moment in your life!

crumbl

**Place Your Ad Here and  
Support our Community!**

Instantly create and  
purchase an ad with

**AD CREATOR STUDIO**



lpicommunities.com/adcreator

**DOES YOUR NONPROFIT  
ORGANIZATION NEED  
A NEWSLETTER?**



**OUR COMMUNITY  
NEWSLETTER**  
OCTOBER EDITION

Engaging,  
ad-supported  
print and digital  
newsletters to reach  
your community.



Scan to  
contact us!

Visit [lpicommunities.com](http://lpicommunities.com)



For ad info. call 1-800-477-4574 • [www.4lpi.com](http://www.4lpi.com)

16-0520





## The Centre

1500 16<sup>th</sup> Street, Palm Harbor

Monday-Thursday 8 am-8 pm

Friday 8 am-4:30 pm

Saturday & Sunday 11 am-2 pm

Weekends, evenings by appointment or event



## Harbor Hall & White Chapel

1190 Georgia Ave, Palm Harbor

Tours, Rentals & Events by appointment



## Sunderman Recreation Complex

1631 9<sup>th</sup> Street, Palm Harbor

Monday-Saturday 9 am-10 pm

Sunday 1 pm-6 pm



## H.S. "Pop" Stansell Park & Pier

797 Florida Avenue, Palm Harbor

Open daily: dawn to dusk



## Palm Field

1151 Riviere Road, Palm Harbor

(Across from Palm Harbor Library)

Monday-Saturday, 9 am-10 pm

Sunday, 1 pm-6 pm



## Centre Field

1500 16<sup>th</sup> Street, Palm Harbor

Daily

8 am-8 pm (May to September)

8 am-6 pm (October to April)



## J. Stephen Putnam Park

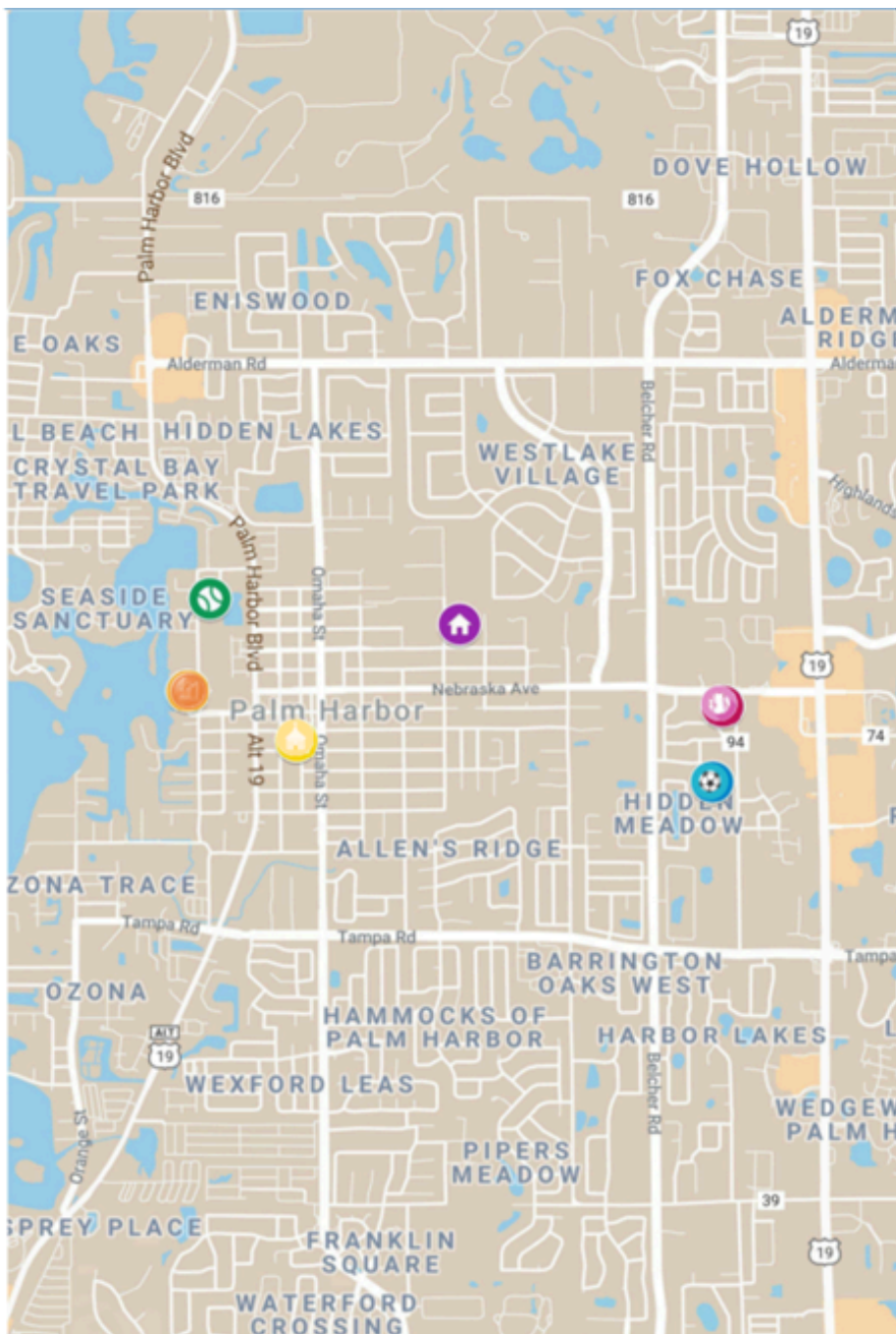
799 Riviere Road, Palm Harbor

Monday-Saturday 8 am-10 pm

Sunday

8 am-8 pm (May to September)

8 am-6 pm (October to April)



## Parks & Rain-Out Info

Parks and fields are generally open to the public during the hours noted. Department sponsored programs may take precedent and certain facilities may be closed for public use during organized times. Subscribe to text or email notification by calling **727.228.1633**, download the app, visit [rainoutline.com](http://rainoutline.com) to register, or get the latest information online at: [PHparksandrec.org](http://PHparksandrec.org)

727-771-6000

## Centre Closures

Memorial Day Monday, May 25

Independence Day (CAMPS OPEN) Friday, July 3

Labor Day Monday, September 7

[www.PHparksandrec.org](http://www.PHparksandrec.org)